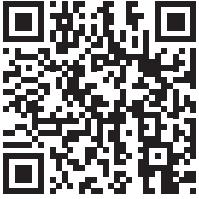




# CBX BOX BLADE



Take a Picture of This QR Code With Your Smart Phone to See it in Action



TRACTOR

## FEATURES & BENEFITS

- Category 1 and 1 Quick Hitch compatible A-frame
- Bolt on A-frame
- 16" side plates
- Adjustable and replaceable shanks
- Two 3/8" x 6" bolt-on reversible and replaceable cutting edges
- Available in 4' and 5'.

## SPECIFICATIONS / OPTIONS

Models	CBX Box Blade 48"	CBX Box Blade 60"
Overall Height	29 1/2"	29 1/2"
Overall Width	4'	5'
Overall Depth	23 1/2"	23 1/2"
Box Depth	17 11/16"	17 11/16"
Weight	240 lbs	280 lbs
Number of Shanks	4	5
Lower Hitch Pin Height	13 5/8"	13 5/8"
Horse Power (2wd-4wd)	24-20	24-20
Cutting Edge	3/8" x 6" Bolt-on reversible & replaceable	3/8" x 6" Bolt-on reversible & replaceable
Hitch	Cat. 1 & Cat. 1 Quick Hitch	Cat. 1 & Cat. 1 Quick Hitch

Available Colors:

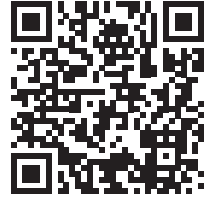




# BBX BOX BLADE



Take a Picture of This QR Code With Your Smart Phone to See it in Action



## FEATURES & BENEFITS

- Bolt on A-frame
- 3/8" x 6" bolt on cutting edge
- 1/4" End plates
- Maximum tractor HP 40 for 2WD or 30 for 4WD
- Category 1 and 1 Quick Hitch compatible A-frame

## SPECIFICATIONS / OPTIONS

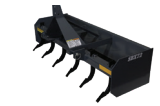
Models	BBX Box Blade 60"	BBX Box Blade 72"
Overall Height	33"	33"
Overall Width	5'	6'
Overall Depth	24"	24"
Box Depth	20"	20"
Weight	325 lbs	390 lbs
Number of Shanks	4	5
Lower Hitch Pin Height	14"	14"
Horse Power (2wd-4wd)	40-30	40-30
Cutting Edge	3/8" x 6" Bolt-on reversible & replaceable	3/8" x 6" Bolt-on reversible & replaceable
Hitch	Cat. 1 & Cat. 1 Quick Hitch	Cat. 1 & Cat. 1 Quick Hitch

Available Colors:

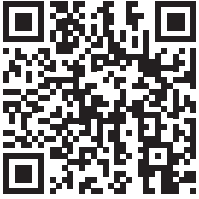




# SBX BOX BLADE



Take a Picture of This QR Code With Your Smart Phone to See it in Action



TRACTOR

## FEATURES & BENEFITS

- Heavy duty welded A-frame & double strap hitch
- 3/8" End plates
- 4" x 4" x 5/16" scarifier box
- Two 1/2" x 6" bolt-on reversible and replaceable cutting edges
- Available in 4, 5, 5 1/2, 6, 6 1/2 & 7 ft.
- Category 1 Quick Hitch compatible

## SPECIFICATIONS / OPTIONS

Models	SBX Box Blade 48"	SBX Box Blade 60"	SBX Box Blade 65"	SBX Box Blade 72"	SBX Box Blade 78"	SBX Box Blade 84"
Overall Height	35 1/4"	35 1/4"	35 1/4"	35 1/4"	35 1/4"	35 1/4"
Overall Width	4'	5'	5.5'	6'	6.5'	7'
Overall Depth	27 1/2"	27 1/2"	27 1/2"	27 1/2"	27 1/2"	27 1/2"
Box Depth	24"	24"	24"	24"	24"	24"
Weight	430 lbs	490 lbs	510 lbs	550 lbs	580 lbs	610 lbs
Number of Shanks	4	5	5	6	6	6
Lower Hitch Pin Height	15 3/4"	15 3/4"	15 3/4"	15 3/4"	15 3/4"	15 3/4"
Horse Power (2wd-4wd)	50-40	50-40	50-40	50-40	50-40	50-40
Cutting Edge	1/2" x 6" Bolt-on reversible & replaceable	1/2" x 6" Bolt-on reversible & replaceable	1/2" x 6" Bolt-on reversible & replaceable	1/2" x 6" Bolt-on reversible & replaceable	1/2" x 6" Bolt-on reversible & replaceable	1/2" x 6" Bolt-on reversible & replaceable
Hitch	Cat. 1 Quick Hitch	Cat. 1 Quick Hitch	Cat. 1 Quick Hitch	Cat. 1 Quick Hitch	Cat. 1 Quick Hitch	Cat. 1 Quick Hitch

Available Colors:



# MBX BOX BLADE



Take a Picture of This QR Code With Your Smart Phone to See it in Action



## FEATURES & BENEFITS

- Two 1/2" x 6" cutting edge
- 1/2" wear plate welded to 3/8" end plates
- Floating rear tailgate
- Category 1 and 2 Quick Hitch compatible
- Triple strap hitch

## SPECIFICATIONS / OPTIONS

Models	MBX Box Blade 60"	MBX Box Blade 72"	MBX Box Blade 84"	MBX Box Blade 96"
Overall Height	35 1/4"	35 1/4"	35 1/4"	35 1/4"
Overall Width	5'	6'	7'	8'
Overall Depth	27 1/2"	27 1/2"	27 1/2"	27 1/2"
Box Depth	24"	24"	24"	24"
Weight	580 lbs	640 lbs	710 lbs	790 lbs
Number of Shanks	5	6	6	6
Lower Hitch Pin Height	15 3/4"	15 3/4"	15 3/4"	15 3/4"
Horse Power (2wd-4wd)	65-55	65-55	65-55	65-55
Cutting Edge	1/2" x 6" Bolt-on reversible & replaceable	1/2" x 6" Bolt-on reversible & replaceable	1/2" x 6" Bolt-on reversible & replaceable	1/2" x 6" Bolt-on reversible & replaceable
Hitch	Cat. 1/2 Quick Hitch	Cat. 1/2 Quick Hitch	Cat. 1/2 Quick Hitch	Cat. 1/2 Quick Hitch

Available Colors:

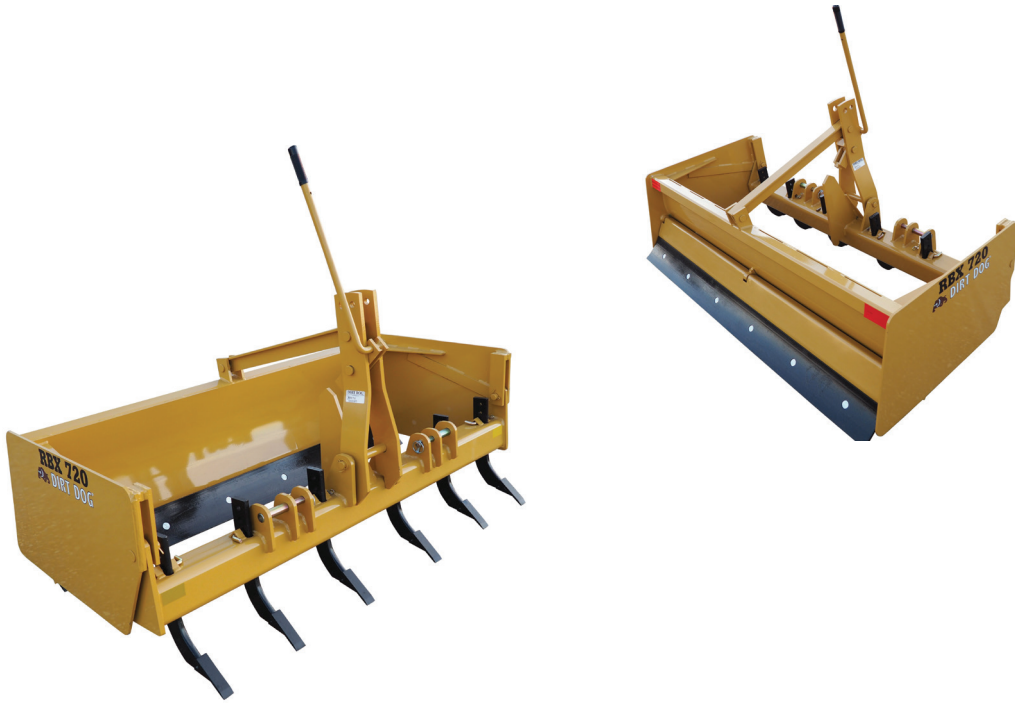
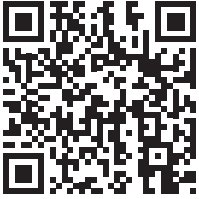




# RETRACTABLE BOX BLADE



Take a Picture of This QR Code With Your Smart Phone to See it in Action



TRACTOR

## FEATURES & BENEFITS

- Heavy duty A-frame & double strap hitch
- Heat treated shanks with replaceable tips
- Two 1/2" x 6" reversible & replaceable cutting edges
- 5" x 5" x 1/2" thick scarifier box
- Depth of shanks is adjustable and retractable
- Available in 6', 6 1/2', and 7'
- The RBX is Dirt Dog's retractable shank box blade series
- Floating rear tail gate

## SPECIFICATIONS / OPTIONS

Models	RBX Box Blade 72"	RBX Box Blade 78"	RBX Box Blade 84"
Overall Height	55"	55"	55"
Overall Width	6'	6.5'	7'
Overall Depth	35"	35"	35"
Box Depth	29 1/2"	29 1/2"	29 1/2"
Weight	829 lbs	890 lbs	957 lbs
Number of Shanks	6	6	6
Lower Hitch Pin Height	13 1/2"	13 1/2"	13 1/2"
Horse Power (2wd-4wd)	60-55	60-55	60-55
Cutting Edge	1/2" x 6" Bolt-on reversible & replaceable	1/2" x 6" Bolt-on reversible & replaceable	1/2" x 6" Bolt-on reversible & replaceable
Hitch	Cat 1 & 2	Cat 1 & 2	Cat 1 & 2

Available Colors:





# ROLLOVER BOX



Take a Picture of This QR Code With Your Smart Phone to See it in Action



## FEATURES & BENEFITS

- 3/4" thick pivot and locking arm
- Two 1/2" x 6" cutting edge
- Maximum tractor HP 60 for 2WD or 45 for 4WD
- Category 1 and Category 1 Quick Hitch compatible
- Double strap hitch

## SPECIFICATIONS / OPTIONS

Models	RO Series 48"	RO Series 60"	RO Series 65"	RO Series 72"	RO Series 84"
Overall Height	34 1/4"	34 1/4"	34 1/4"	34 1/4"	34 1/4"
Overall Width	4'	5'	5 1/2'	6'	7'
Overall Depth	43"	43"	43"	43"	43"
Box Depth	22 3/4"	22 3/4"	22 3/4"	22 3/4"	22 3/4"
Weight	525 lbs	630 lbs	680 lbs	710 lbs	780 lbs
Number of Shanks	4	5	6	6	6
Lower Hitch Pin Height	14 1/2"	14 1/2"	14 1/2"	14 1/2"	14 1/2"
Horse Power (2wd-4wd)	60-45	60-45	60-45	60-45	60-45
Cutting Edge	1/2" x 6" Bolt-on reversible & replaceable	1/2" x 6" Bolt-on reversible & replaceable	1/2" x 6" Bolt-on reversible & replaceable	1/2" x 6" Bolt-on reversible & replaceable	1/2" x 6" Bolt-on reversible & replaceable
Hitch	Cat. 1 & Cat. 1 Quick Hitch	Cat. 1 & Cat. 1 Quick Hitch	Cat. 1 & Cat. 1 Quick Hitch	Cat. 1 & Cat. 1 Quick Hitch	Cat. 1 & Cat. 1 Quick Hitch

Available Colors:

