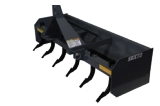
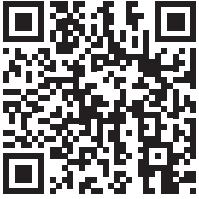




# SBX BOX BLADE



Take a Picture of This QR Code With Your Smart Phone to See It in Action



TRACTOR

## FEATURES & BENEFITS

- Heavy duty welded A-frame & double strap hitch
- 3/8" End plates
- 4" x 4" x 5/16" scarifier box
- Two 1/2" x 6" bolt-on reversible and replaceable cutting edges
- Available in 4, 5, 5 1/2, 6, 6 1/2 & 7 ft.
- Category 1 Quick Hitch compatible

## SPECIFICATIONS / OPTIONS

Models	SBX Box Blade 48"	SBX Box Blade 60"	SBX Box Blade 65"	SBX Box Blade 72"	SBX Box Blade 78"	SBX Box Blade 84"
Overall Height	35 1/4"	35 1/4"	35 1/4"	35 1/4"	35 1/4"	35 1/4"
Overall Width	4'	5'	5.5'	6'	6.5'	7'
Overall Depth	27 1/2"	27 1/2"	27 1/2"	27 1/2"	27 1/2"	27 1/2"
Box Depth	24"	24"	24"	24"	24"	24"
Weight	430 lbs	490 lbs	510 lbs	550 lbs	580 lbs	610 lbs
Number of Shanks	4	5	5	6	6	6
Lower Hitch Pin Height	15 3/4"	15 3/4"	15 3/4"	15 3/4"	15 3/4"	15 3/4"
Horse Power (2wd-4wd)	50-40	50-40	50-40	50-40	50-40	50-40
Cutting Edge	1/2" x 6" Bolt-on reversible & replaceable	1/2" x 6" Bolt-on reversible & replaceable	1/2" x 6" Bolt-on reversible & replaceable	1/2" x 6" Bolt-on reversible & replaceable	1/2" x 6" Bolt-on reversible & replaceable	1/2" x 6" Bolt-on reversible & replaceable
Hitch	Cat. 1 Quick Hitch	Cat. 1 Quick Hitch	Cat. 1 Quick Hitch	Cat. 1 Quick Hitch	Cat. 1 Quick Hitch	Cat. 1 Quick Hitch

Available Colors:

